

Inside this Issue

- 1 Cover Story:
Beautiful Ethnic
Jewelry Collection
- 2 December Meeting
Summary
- 2 January Meeting
Summary
- 3 Cool Events -
Classes & Events
- 4 Membership
Information
- 5 Member 2 Member
Buy, Sell, & Trade

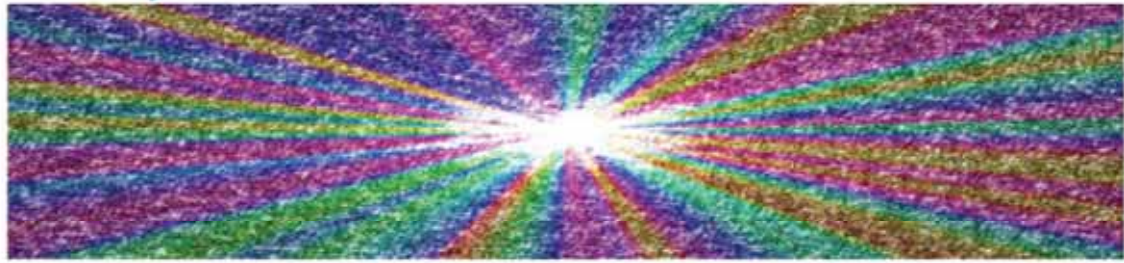
Baltimore Bead Society

Howard Center for
the Arts

8510 High Ridge Road
Ellicott City, MD 21043

[http://
www.baltimorebead.org/](http://www.baltimorebead.org/)

Sparkle and Shine



Cover Story: Beautiful Ethnic Jewelry Collection

Provided by Susan Adler Davis

The Baltimore Museum of Art recently re-opened its African Art Gallery with a fresh new look. Within the exhibit are several pieces of ethnic jewelry from the 18th and 19th centuries donated by Saidie Adler May.

The mask, shown here, is a small 19th century gold alloy piece made into a pendant by adding a bail. This unique piece is from the Baule



region of the Ivory Coast. Also in the collection are a gilded silver alloy necklace adorned with coral beads hung on a silver linked chain, a large ornately decorated cuff, and three small, beautifully detailed "placque" pendants.

Adler May lived in Paris from the late 1920s until 1958 where she studied and collected

art and antiquities. Several pieces originated in Tunisia and were made of gilded silver alloy. Coral beads and fringe were often used as embellishments.

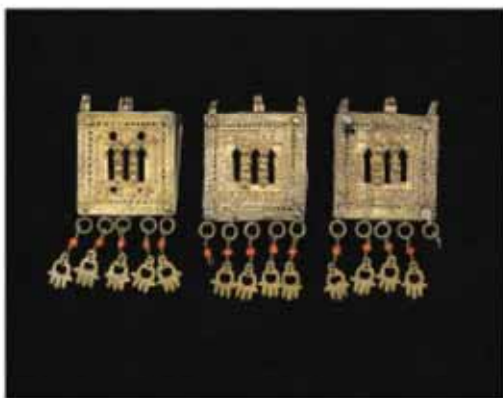
During the 20th century, Europeans were fascinated with anything foreign and exotic. The fascination with Asian, African, and Native American arts and jewelry filled galleries



throughout our nation. May collected jewelry and beads from ancient Egypt, Greece, and Italy. She also collected pieces from the European Renaissance and at least 12 Native American beaded belts and purses.

When Saidie May moved back to the United States at the onset of World War II, she concentrated her collecting efforts on this country. Pierre Matisse, son of the French Impressionist Henri Matisse, opened a gallery in New York in the 1930s. Adler purchases numerous pieces of art that since have been donated to museums here in Baltimore. We

can find more than 87 pieces of antique jewelry at the Baltimore Museum of Art as



well as the Walters Art Museum.

The Baltimore Bead Society is proud to call the great-great niece of Saidie Adler May one of their own. Many thanks to Susan Adler Davis for sharing this story and photographs from this beautiful collection.

Monthly Program News

December 2016

The December meeting was full of fun and excitement with our annual Bingo Night! Lots of friendly faces, food, and prizes made



for a wonderful time. The Bead Society sponsors Bingo Night every December as part of our end of year celebration. If you haven't attended before, it's an event you don't want to miss. Many thanks to the program coordinator and all the volunteers that made it happen.

The December meeting was also the finale of the "Ugly Bead" Challenge. Entries in the challenge were all fabulous. Each artist created a piece which required the use of what some would call "an ugly bead." What one Beader may see as ugly could be a treasure to another.

So many talented individuals presented unique pieces of art that by no means could be called ugly.



The 1st Place winner of this year's challenge was Paulette Privott. Second, Third, and Fourth Place prizes went to Patti McCormick, Yvonne Frye, and Priscilla Dymczenski.



January 2017

We kicked off January with a night of mini-workshops. These five workshops offered were Chain Maille taught by Nancy Ennis, Wire Wrapping with Gay Durland, Beaded Ropes by Shannon Nelson, Peyote Triangles with Katherine Demes, and Bead Crochet with Susan Davis. Each member was able to participate in two mini sessions during the evening where a technique was demonstrated and the member could try their hand at learning something new or practice a skill. The classes were 45 minutes each and require minimal materials.

All of the workshops were a big success. This event was not only about crafting, it provided an opportunity for member to laugh, socialize, and explore new areas they may not have imagined. Many thanks to the wonderful teachers for sharing their time and skills with the group.



Cool Events

February 2017

S...M...T...W...T... Fri Sat

29	30	31	1	2	3	4
5	6	7	8	9	10	11
12	13	14	15	16	17	18
19	20	21	22	23	24	25
26	27	28	1	2	3	4
5	6	7	8	9	10	11

March 2017

S...M...T...W...T... Fri Sat

26	27	28	1	2	3	4
5	6	7	8	9	10	11
12	13	14	15	16	17	18
19	20	21	22	23	24	25
26	27	28	29	30	31	1
2	3	4	5	6	7	8

April 2017

S...M...T...W...T... Fri Sat

26	27	28	29	30	31	1
2	3	4	5	6	7	8
9	10	11	12	13	14	15
16	17	18	19	20	21	22
23	24	25	26	27	28	29
30	1	2	3	4	5	6

February

2/4 - Tempered Glass Heart Mosaics

Teacher: Barbara Svoboda

Time: 10:00-4:00PM

Fees: \$45 for BBS Members / \$55 non-members

Kit Fee: \$15

Location: Held at instructor's home

2/11 - Kaleidocycle **Postponed**

Teacher: Kat Oliva

Time: 10:00-4:30PM

Fees: \$55 for BBS Members / \$70 non-members

2/16 - Fabulous Fringed Finials

Teacher: Paulette Privott

Time: 6:30-9:00PM

Class Fee: \$15

Kit Fee: \$10

March

3/16 - Chenille Stitch

Teacher: Susanne Schemm

Time: 6:30-9:00PM

Class Fee: \$15

Teacher's notes: Please bring 11/0 seed beads in 2 colors, fireline, needles, bead mat, etc.

3/16 - The Fanciful World of Fairies

Teacher: Priscilla L. Dymczenski

Time: 6:30-9:00PM

Class Fee: \$17 BBS Members / \$27 non-members

Kit Fee: TBD

3/18 - Creating a Personal Focal Pendant

Teacher: Mari O'Dell

Time: 10:00-5:00PM

Class Fees: \$70 for BBS Members / \$80 non-members

Kit Fees: \$25

3/19 - Creating a Personal Focal Pendant

Teacher: Mari O'Dell

Time: 10:00-5:00PM

Class Fees: \$70 for BBS Members / \$80 non-members

Kit Fees: \$25

April

4/20 - Bead Embroidery

Teacher: Susan Davis

Time: 6:30-9:00PM

Class Fees: \$17 BBS Members / \$27 non-members

Membership Information

Renew, Refresh, ReBoot!

General Information

The Baltimore Bead Society is a non-profit educational corporation allowed by law under IRS Section 501 (c)(3). The BBS provides activities and educational opportunities for its members.

Meetings: The Bead Society shall meet 10 months each year, on the second Tuesday of each month from September through June. The monthly member meeting will begin at 6:30 p.m. with refreshments and social time. This is an excellent opportunity to sign up for workshops, check out the lending library, and socialize with other members. Official business will begin at 7 pm. followed by the scheduled activity for the evening.

Activities: Each member is encouraged to participate in BBS activities. Activities may include Thursday Classes, Weekend Workshops, The Annual Bead Show, Bead Challenges, Bingo, and Member Gatherings. Other activities may include Trips, Public Outreach Programs.

Annual Dues: Annual fees for membership is currently \$35.

Member Benefits Include:

- _ Educational Workshops
- _ Guest artist and speakers
- _ Discounts on various BBS classes
- _ Access to the Lending Library
- _ Discounts from various vendors at BBS sponsored shows
- _ Special Events (ie. bead swaps, vendor night, Make & Take activities, etc.)
- _ Discount on annual membership renewal upon completing volunteer requirements
- _ Access to the BBS Website and Social Media Group
- _ Access to the BBS Newsletter

Volunteer Opportunities: Like most not-for-profit organizations, the BBS relies heavily on its members to volunteer their time or services. There are volunteer opportunities at every event both within the Bead Society and outside in the community. A sustainable organization requires all members to participate and contribute in some manner. Please contact the Volunteer Coordinator and express your interest in contributing.

Meet the Board!

President	Debbi Fowlkes
Vice President	JoAnn Albert
Recording Secretary	Claire Jefferson
Corresponding Secretary	Zan Koldeway
Treasurer	Donna Threadgill
Membership	Judy Alexander
Winter Bead Show	Johanna Stange & Celeste Thurston
Program Chair	JoAnn Albert
Thursday Classes	Barbara Svoboda
Weekend Workshops	Robin Dunn
Newsletter Editor/Co-Editor	Marcia Martin & Danielle Martin
Librarian	Katherine Demes
Hospitality	Ellen Ruberry
Photographer	Avie Scates
Bead Swap	Debbie Shipley
Publicity	Nancy Ennis
Archivist	Susan Davis
Showcase Sales	Fran Pearlman
Volunteer Coordinator	Marlene Lesley
Bead Challenge	Gay Durland
Web Coordinator	Celeste Thurston

Welcome New Members

Joyce Duffy-Bilanow	Carolyn Handler
Capitola Bradshaw	Selena Jackson
Gwen Brown	Nancy Pollock
Michael Buczkowski	Marilyn South
Patricia Ferris	Natalie Thomas
Mary Gauniel	Ann White

Don't Worry



Bead Happy
ALL FREE JEWELRY MAKING

Member 2 Member

For Sale

Pasta Maker and Toaster Oven for Polymer Clay

Sacrificing for \$25 total.

Cash, check or PayPal (friend to friend).

Pick up at my home (less than 2 miles from BBS meeting site)

If Interested contact: Teddi Fine (editted@gmail.com)

YOU CAN'T
BUY LOVE,
BUT YOU CAN
Buy Handmade
AND THAT'S KIND OF
THE SAME THING.

Newsletter Contributions:

*All submissions should be sent to
BeadingTogether@gmail.com no
later than the 28th of each
month.*

*Please include "Newsletter" in
the subject line.*

Books For Sale

Glass

- Fused Glass Art and Technique (Richard La Londe)...List \$44.99..... \$25.00
- Advanced Fusing Techniques, (Boyce Lundstrom).....List \$36.99.....\$18.00
- Introduction to Glass Fusing (Petra Kaiser).....List \$23.95.....\$11.00
- Contemporary Warm Glass (Brad Walker)..... List \$47.95..... \$25.00

Beading

- Making Designer Freshwater Pearl Jewelry (Nicole Sherman).List \$24.95...\$12.00
- Beaded Cords, Chains, Straps and Fringe (Beadwork Mag)....List \$9.95....\$ 4.50
- Beading with Cabochons (Jamie Cloud Eakin)..... List \$24.95... \$12.00
- Beading with Crystals (Karherine Aimone/Jean Campbell).....List \$24.95...\$12.00
- The Best of Beadwork..... List \$7.99.... \$ 4.00
- Fabulous Fabric Beads (Kristal Wick).....List \$22.95... \$10.00

Metal Clay

- PMC Technic (Tim McCreight)List \$30.00..... \$15.00
- PMC Decade (Tim McCreight).....List \$35.00... \$18.00
- Working with Precious Metal Clay (Tim McCreight).....List \$29.04... \$14.00
- Creative Metal Clay Jewelry (CeCe Wire).....List #27.95... \$17.00
- Metal Clay for Beaders (Irina Miech).....List \$19.95... \$ 9.00
- Metal Clay Magic (Nana Mizushima).....List \$21.95.....\$11.00
- Designing from the Stone-metal clay (Lisa Barth).....List \$24.98 ... \$11.00
- Metal Clay Jewelry (Louise Duhamel)..... List \$22.99... \$11.00
- Making Pure Silver Accessories with Art Clay.....List \$22.50... \$10.00

Metal Work

- Jewelry: Fundamentals of Metalsmithing (McCreight).....List \$29.99..... \$15.00
- Making Metal Beads (Pauline Warg).....List \$24.95..... \$12.00

Other

- Making a Living in Crafts (Donald A. Clark).....List \$19.95..... \$10.00
- Uniquely Felt (Christine White).....List \$24.95..... \$12.00
- Collage Discovery Workshop (Claudine Hellmuth).....List \$22.99..... \$11.00
- Sew Me, Love Me (stuffed toys).....List \$19.95..... \$ 9.00
- The Complete Photo Manual (Poplar Photography)..... List \$31.95..... \$15.00
- Shibori (Wada, Rice, Barton) The bible!.....List \$120.00..... \$65.00

If Interested contact: Teddi Fine (editted@gmail.com)

REBELS MARKET

I WAS GOING TO TAKE
OVER THE WORLD.
BUT THEN I SAW
SOMETHING SHINY.

Buy & Sell Fashion for Members of RebelsMarket